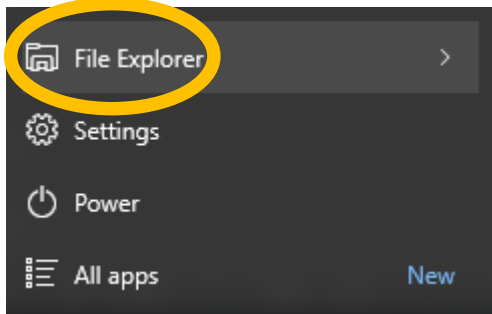
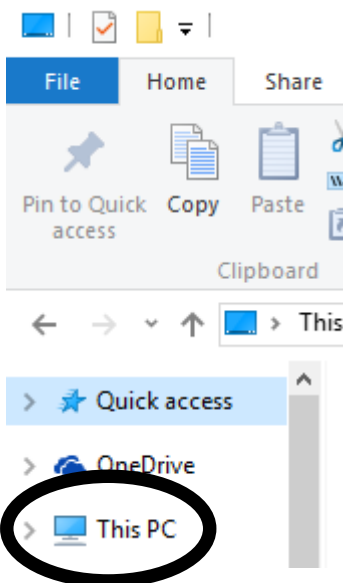


## WEL Penetrometer Quick Start Guide

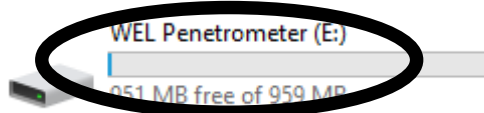
1. Insert the provided USB flash drive into the computer.
2. (Windows 10) Click the Windows Logo in the bottom left.
3. (Windows 10) In the menu which pops up click on **"File Explorer"**.



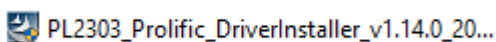
4. (Windows 10) Click on **This PC**.



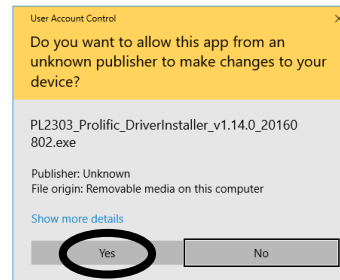
5. Double click on the **"WEL Penetrometer"** USB drive.



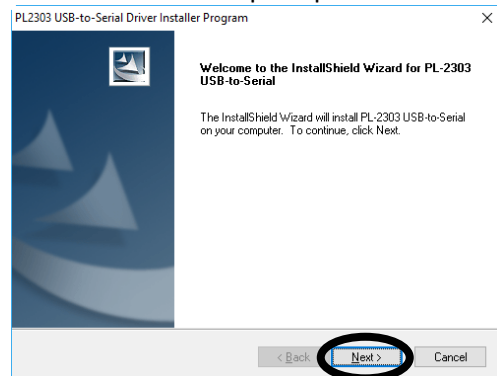
6. Double click on the **"USB to Serial Adapter Cable Driver"**
7. Double click on **"PL2303\_Prolific\_DriverInstaller\_v1.14.0\_20160802.exe"**



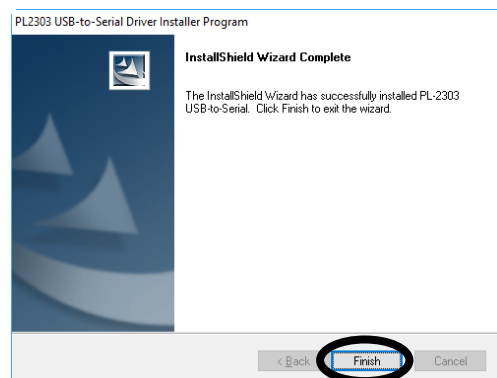
8. Click on **"YES"** in the below prompt.



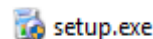
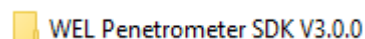
9. Click **"Next"** on this prompt



10. Click on **"Finish"** to close this window.

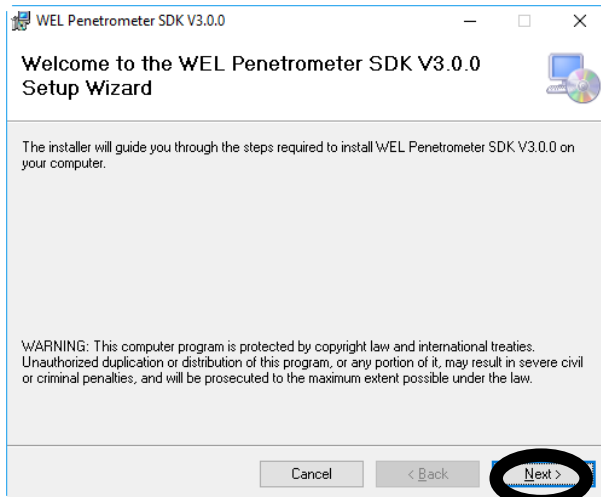


11. Navigate back to **"WEL Penetrometer"** USB drive.
12. Double click on **"WEL Penetrometer SDK V3.0.0"**
13. Double click the **"setup.exe"**

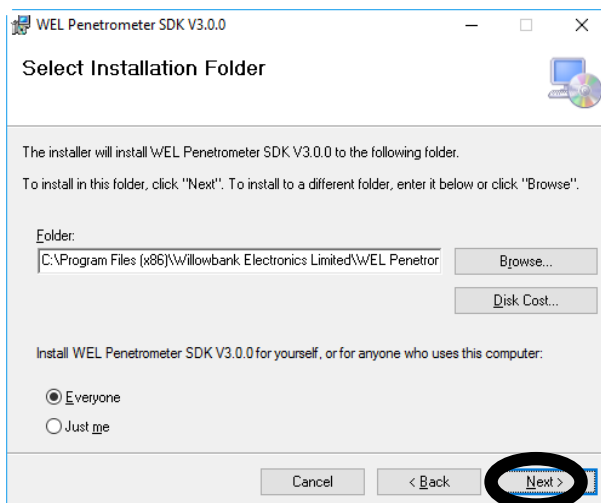


## WEL Penetrometer Quick Start Guide

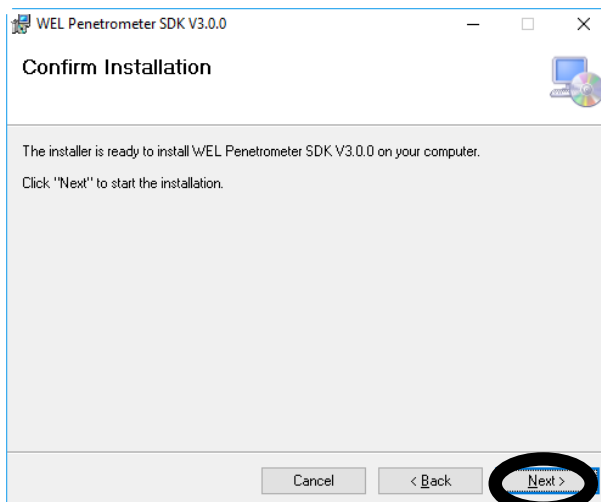
### 14. Click the **Next** Button



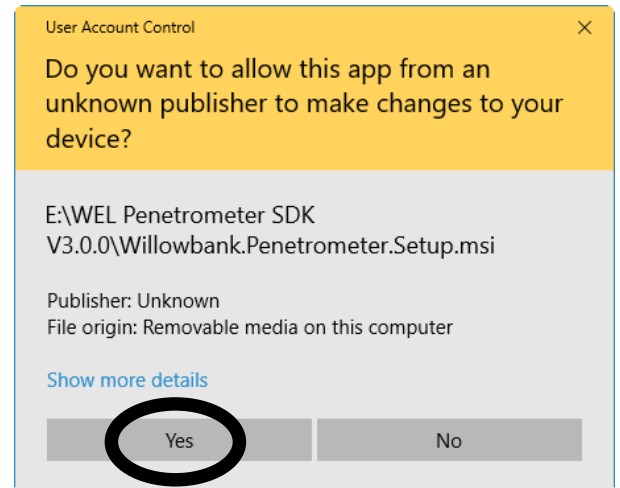
### 15. Click the **Next** Button



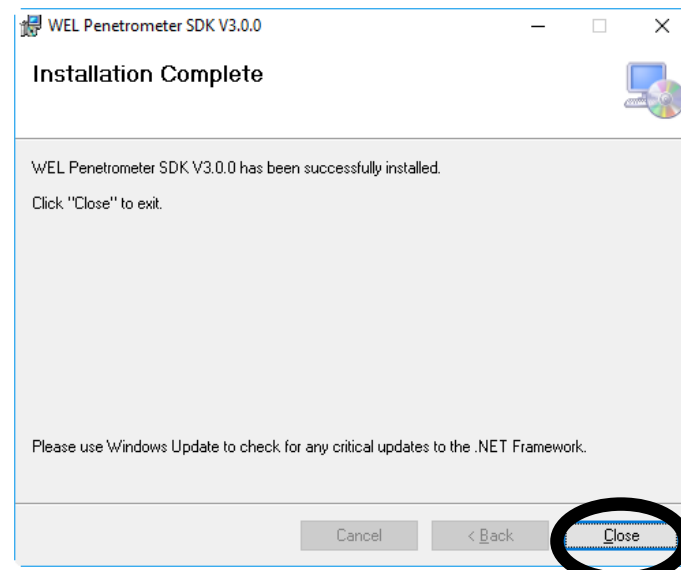
### 16. Click the **Next** Button



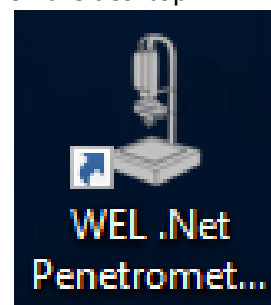
### 17. Click on **"Yes"**



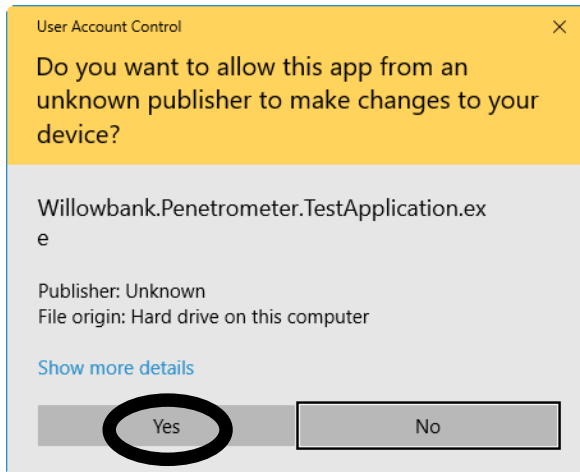
### 18. Click the **Close** Button



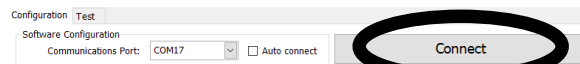
### 19. Double click on **WEL .Net Penetrometer Config** on the desktop.



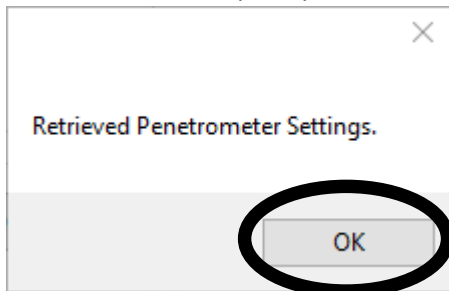
20. Click on **"Yes"**



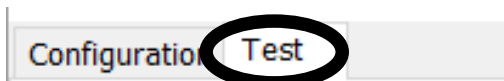
21. Select the **Communications Port** of the Penetrometer. Then click on the **Connect** button.



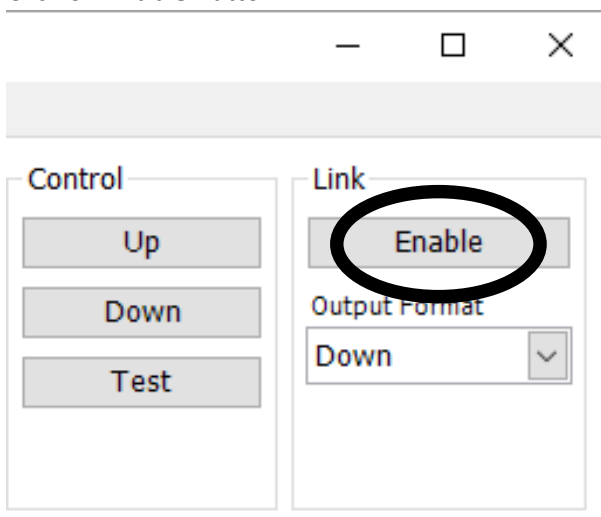
22. Click **OK** the below prompt



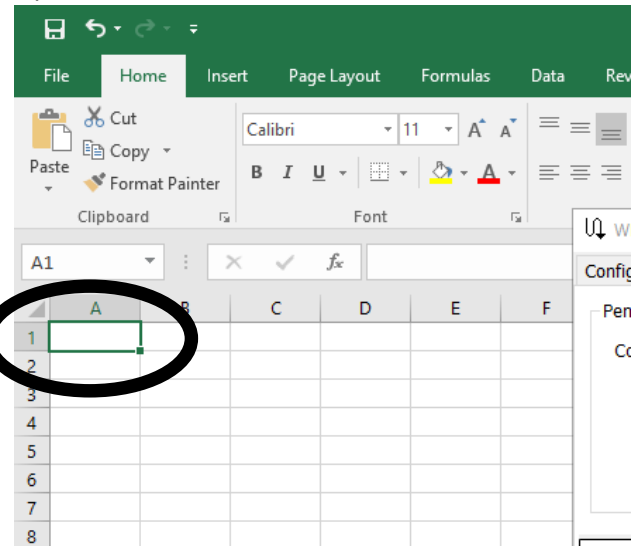
23. Click on the **Test** tab



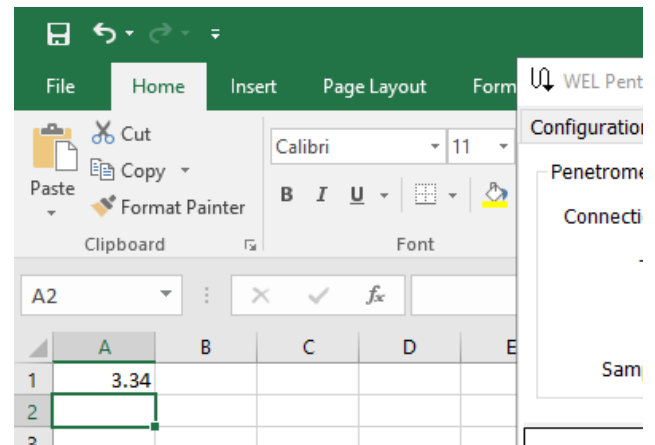
24. Click on **Enable** Button



25. Open Excel and select a cell in Excel.

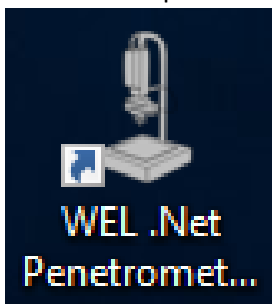


26. Press the foot pedal to take a measurement. The result will be entered into Excel

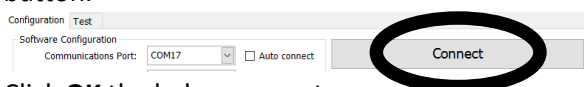


## Calibrating WEL Penetrometer

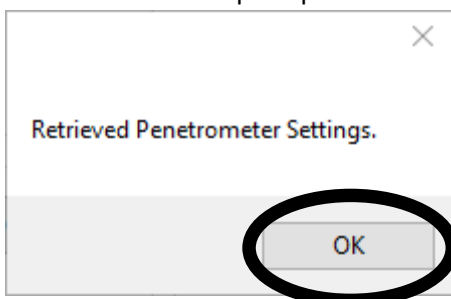
1. Double click on **WEL .Net Penetrometer Config** on the desktop.



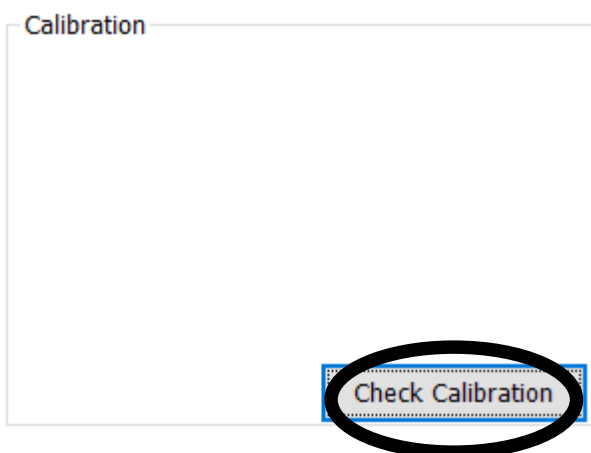
2. Select the **Communications Port** of the Penetrometer. Then click on the **Connect** button.



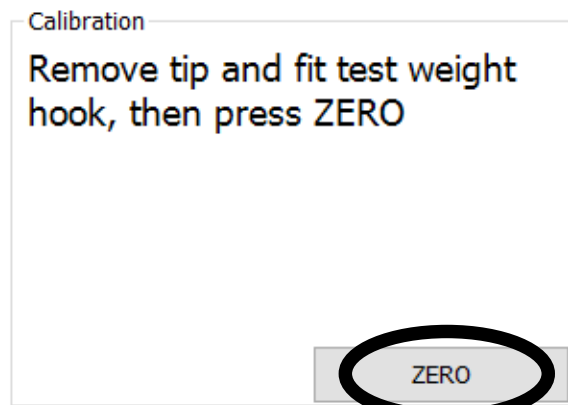
3. Click **OK** the below prompt



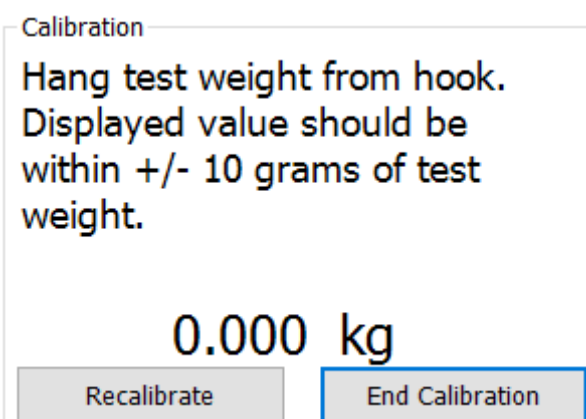
4. Click **Check Calibration**



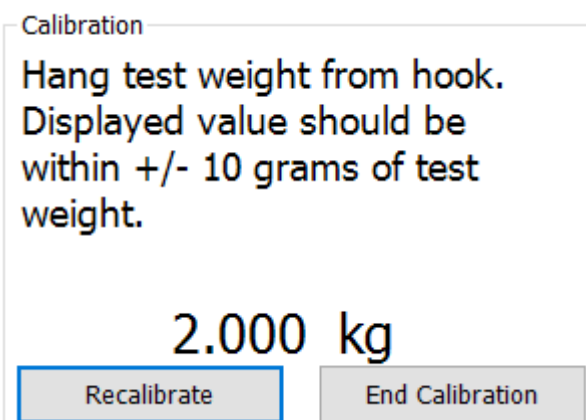
5. Remove tip and fit test weight hook, then click on **Zero** Button



6. Hang test weight from hook.



7. Check displayed value is within +/- 10 grams of test weight. If the value is outside this range, click **Recalibrate** button and follow steps 10-11. Otherwise click **End Calibration** and you are ready to use the penetrometer.



## WEL Penetrometer Quick Start Guide

8. Enter the calibration weight. The weight must be over 1.5kg and be accurate to 3 decimal places.

Click **Save Calibration**

Calibration

Enter calibration weight. The weight must be over 1.5kg and be accurate to 3 decimal places

kg

2.000 kg

**Save Calibration** End Calibration

9. Check the correct weight is now being displayed. If the correct weight is being displayed click End Calibration. If the weight displayed isn't correct click **Recalibrate**.

Calibration

Hang test weight from hook. Displayed value should be within +/- 10 grams of test weight.

2.000 kg

Recalibrate **End Calibration**